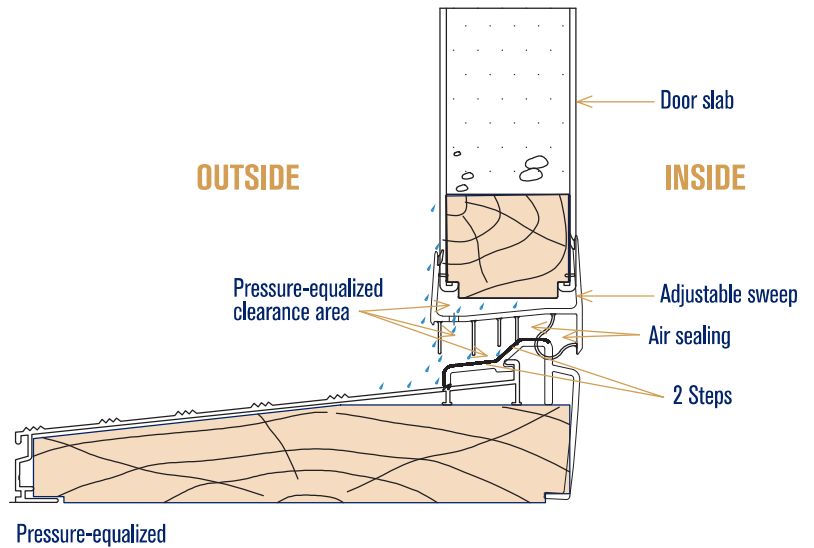


Forimpex<sup>★</sup>

FORIMPEX.CA

# DOOR SILL B.E.S.T. CONTACT

## Door sill / Sweep System



Canada and American Patented door sill system offering the best water tightness and unique pressure balance on the market

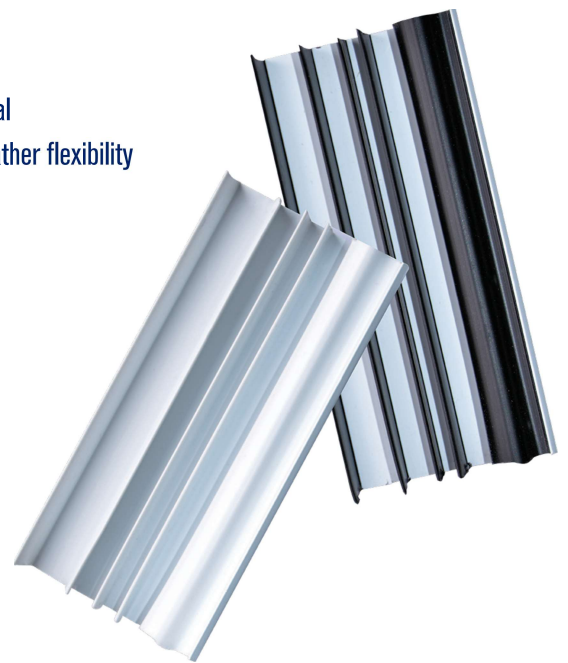
## DOOR SILL / SWEEP SYSTEM

- Heavy duty bulb and fins made from premium raw material
- Low temperature resistant bulbs and fins to insure all weather flexibility
- Screwless sweep for quick and flexible installation
- "Piggy-Back" NAFS labels supplied at no charge

## NAFS "FX" SYSTEM APPROVED

### 3 DOORS CONFIGURATIONS

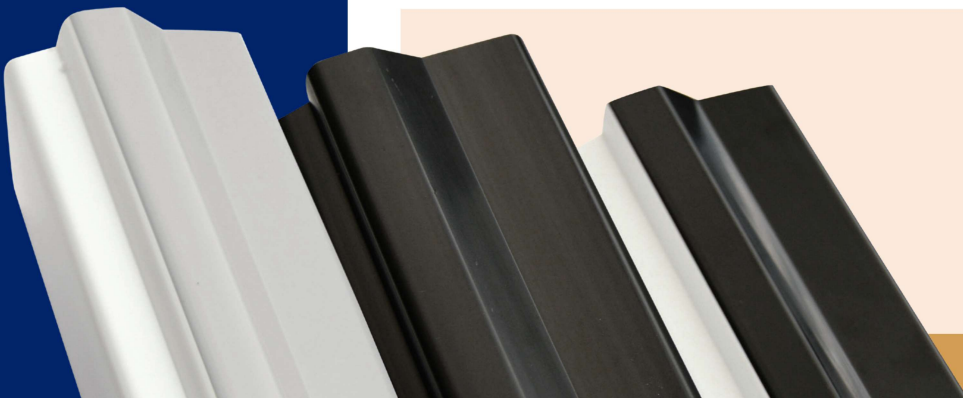
- 1 Single Inswing
- 2 Single Outswing
- 3 Double Inswing



TESTED  
AND APPROVED  
NAFS

## CHOICE OF THRESHOLD

- Grey exterior and white interior
- Black exterior and interior
- Black exterior and white interior



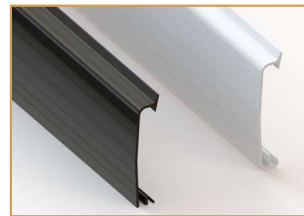
## INSWING SWEEP WITH SLIDING ANODIZED CAP

- Available with black or white bulb and fins
- Exterior aluminum cap offered in black and natural anodized



## SCREW COVER

- Interior PVC screw cover (optional)
- Available in black or white



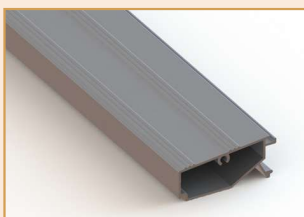
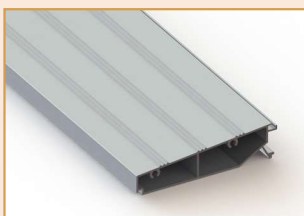
## UNIQUE CORNER SEALING

- Available in black or white



## EXTENSIONS

- Extend up to 11 1/4" width
- 4 7/8", 6 7/8", No need to notch jambs (4 9/16", 6 9/16")
- Fixed sill and adjustable sweep system
- Designed for Canadian climate VS American style adjustable sills
- Unique corner sealing system keeps out water and air



## STANDARD SILL 2 1/8"

Dimensions (inches) and colors available

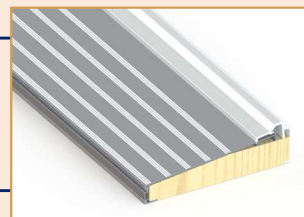
	SILLS	EXTENSIONS
Clear anodized	4 5/8 - 4 7/8 - 5 1/4 - 6 5/8 6 7/8 - 7 1/4 - 8 5/8 - 9 1/4 - 9 3/4	1 1/2 - 2 - 2 1/2 - 3 1/2 - 4
Black anodized	4 5/8 - 4 7/8 - 6 5/8 6 7/8 - 7 1/4 - 9 1/4	1 1/2 - 2 - 3 1/2 - 4

## LOW PROFILE SILL 1 5/8"

Dimensions (inches) and colors available

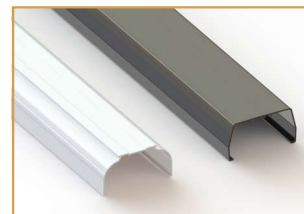
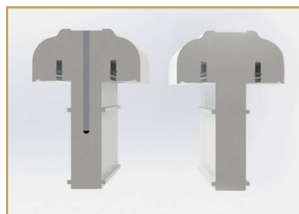
	SILLS	EXTENSIONS
Clear anodized	4 7/8 - 6 7/8 - 7 1/4	1 1/2 - 2 - 3 1/2
Black anodized	4 7/8 - 6 7/8	1 1/2 - 2 - 3 1/2

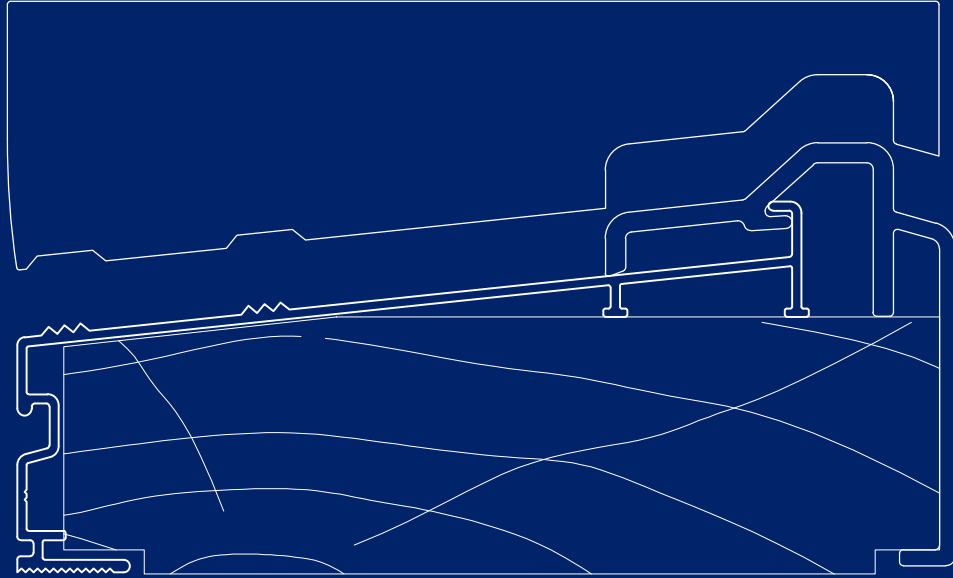
SAVE TIME AND MONEY  
BY USING OUR  
PRE-ASSEMBLED SILLS



## DOUBLE DOOR FEATURES

- Prefinished astragal
- Aluminum astragal cap available in colonial and contemporary style





Patented system

Forimpex<sup>★</sup>

200-D, rue Sainte-Christine  
Saint-Joseph-de-Beauce (Québec) G0S 2V0

---

418 397-1510 ■ Toll free : 1 833 397-1510  
Fax : 418 397-1512

FORIMPEX.CA